



HomeWorld, Thornton

Welcome Home

Welcome to our display village at HomeWorld Thornton. We are proud to present four new designs showcasing the best of single and double storey living.

We have an extensive range of other designs available to fit all types and sizes of blocks, lifestyles and families. Unlike many other builders, we embrace flexibility. After all, it's your family home.

Please feel free to have a no obligation discussion with any of our experienced Building and Design specialists to discuss your wants, needs and queries. Thanks for taking the time to visit us.

Make yourself at home!



**100% Australian
Family Owned**

Glenrowan Four 34

with Rosewood façade



HOME SUITS 16.5m WIDE LOTS

SUITS 31m DEEP LOTS

Home width: 14.29m
Home length: 23.60m

Living: 253.34m²
Terrazza: 24.15m²
Garage: 36.40m²
Patio: 11.13m²

Total: 325.02m²

Glenrowan Four 34 is a Livable House Design



What is Livable Housing Design?

A livable home is designed and built to meet the changing needs of occupants across their lifetime.

Livable homes include key easy living features that make them easier and safer to use for all occupants including: people with disability, ageing Australians, people with temporary injuries, and families with young children.

A **Livable** home is designed to:

- ✓ be easy to enter
- ✓ be easy to navigate in and around
- ✓ be capable of easy and cost-effective adaptation, and
- ✓ be responsive to the changing needs of home occupants.



Glenrowan

Rosewood

On Display



Hampton 2



This family home invites comfort and radiates modern elegance. From the kitchen to the many living spaces to the enormous master bedroom with oversized ensuite, you will feel like royalty every time you pull into the driveway. Enjoy the perfect setting for relaxing and entertaining in the open plan living that continues onto the terrazza area.



Glenrowan

Seaview



Vista 2



Moselle Riesling Four 31

with Executive façade



HOME SUITS 15m WIDE LOTS

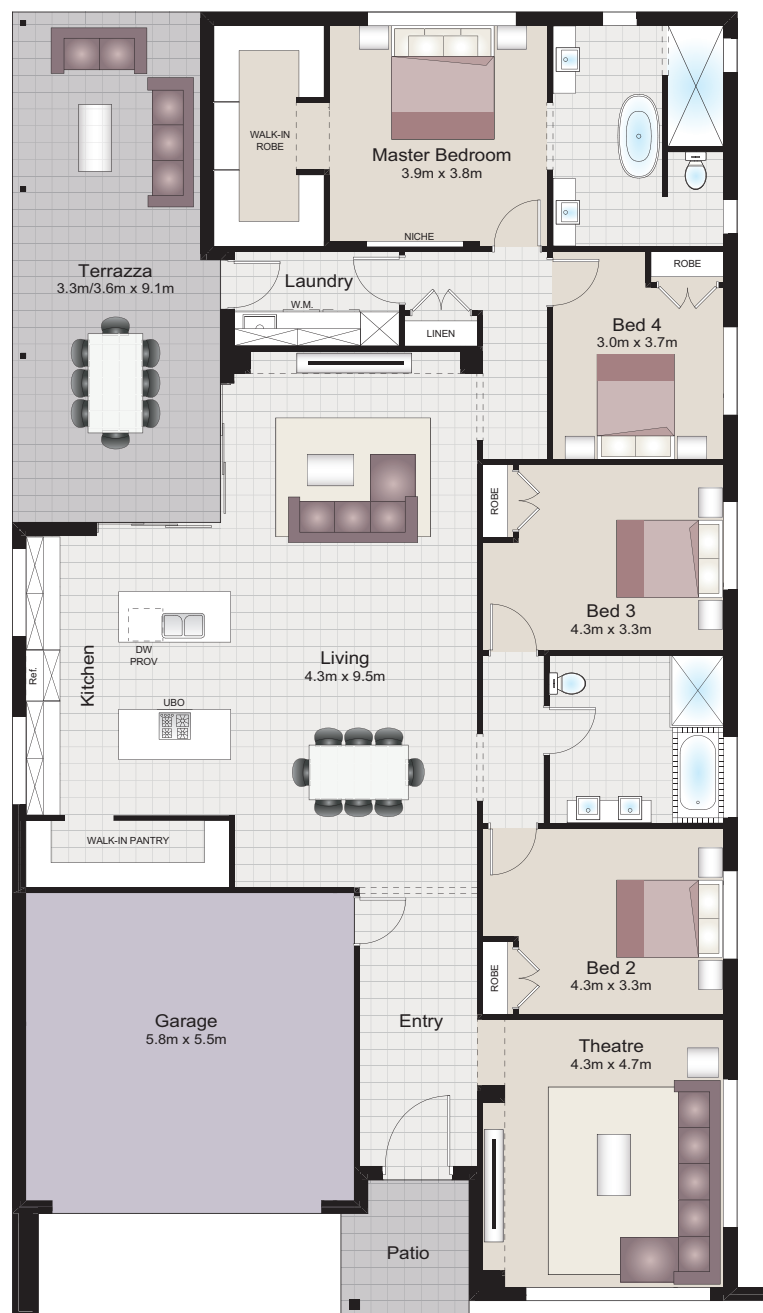
SUITS 31m DEEP LOTS

Home width: 12.95m
Home length: 23.33m

Living: 216.89m²
Terrazza: 32.33m²
Garage: 35.21m²
Patio: 4.90m²

Total: 289.33m²

23.60



14.29

Moselle Riesling

Executive

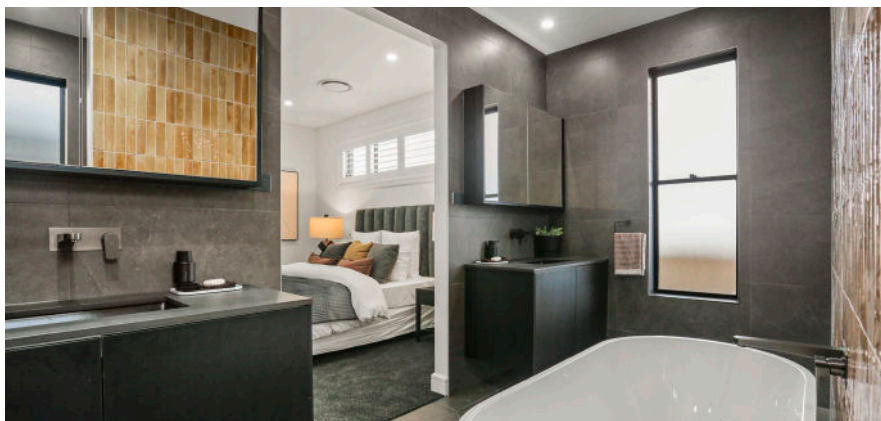


On Display

Aspen



Based on our most popular range, this new open plan design with its optional stylish double bench gourmet kitchen accentuate the finer details in a modern home. The **Moselle Riesling's** four spacious bedrooms, luxurious bathrooms, independent theatre and generous terrazza are just a few of the highlights.



Moselle Riesling

Geneva



Seville 4



Grenache Loft with Cabernet Granny Flat

with Hampton 3 façade



COMBINED SUITS 14.5m WIDE LOTS

SUITS 30+m DEEP LOTS

Home width:	12.23m
Home length:	22.76m
Home Living:	185.64m ²
Terrazza:	17.99m ²
Garage:	32.09m ²
Patios:	11.03m ²
Granny Flat Living:	54.66m ²
Total:	301.41m²



12.23

Granny Flat Option

Grenache Loft

On Display



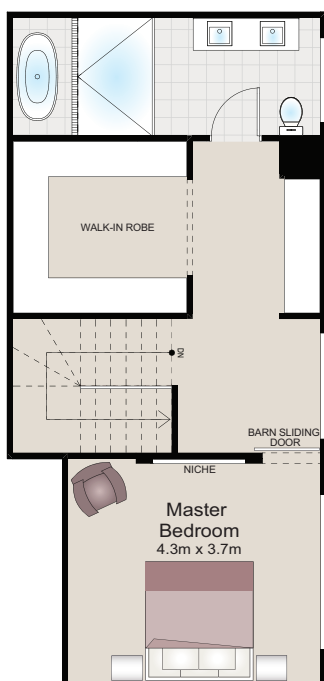
Geneva



Hampton 5



Great for living or investment or both, the **Grenache Loft** features the main living area centred around the homely kitchen. Upstairs is a light-filled parents' retreat, including a deluxe walk in robe that will make you the envy of all your friends. Did we mention this home also includes a one bedroom granny flat under the main roof?



Granny Flat Option

Frontages up to 15m

Pavilion 1



Seville 2



Vista 4



Granny Flats

A great way to maximise your living space

One of the biggest trends today is granny flats. A great option for additional family members or investment.

As traditional granny flats are often separated from the main house, our Design Team not only wanted to create those designs, but to also offer another alternative for blocks that may not have the luxury of space in the backyard for a separate granny flat.

The result is a series of new granny flat designs that can be added or **attached** to a selected range of our home designs.

These granny flat designs offer a choice of one or two bedroom designs and are completely self-contained from the main residence.

These designs are mostly 'tucked away' behind the garage, offering a separate entry that will not interfere with the appearance of the main dwelling.

We also have more traditional, **freestanding** granny flats that can be placed in your backyard if you prefer - please talk to our friendly sales consultant for more information and advice on what will be the best option for your block requirements and/or please feel free to take our new Granny Flat Collection brochure.



Beechwood Tip

For some designs, a granny flat is attached to main dwelling as indicated below.



Single Storey main dwellings in the range

Sauvignon

See Up to 11m Designs

Grenache

See Up to 11m Designs

Chianti

See Up to 13m Designs

Bardolino

See Up to 15m Designs

Attachable Granny Flats available

Blanc One

Blanc Two

Cabernet One

Cabernet Two

Semillon One

Semillon Two

Granny Flat Option

Burgundy

Five Guest 37

with Oslo façade



SUITS 13m WIDE LOTS

SUITS 28m DEEP LOTS

Home width:	10.79m
Home length (extended Terrazza):	24.43m
Ground Floor Living:	146.18m ²
First Floor Living:	132.71m ²
Terrazza:	42.59m ²
Garage (Double):	34.18m ²
Patio:	8.13m ²
Balcony 1:	8.62m ²
Balcony 2:	11.98m ²
Total:	384.39m²

2021 Finalist - HIA NSW/Best Display Home



24.43



10.79

Burgundy

On Display



Classic 1



Classic 2



The Burgundy includes touches of opulence with its staircase, classic kitchen and luxe master bedroom with a parents retreat. Featuring four other bedrooms, including a downstairs guest room, a home theatre, a terrazza perfect for entertaining, covered front and rear balconies, new Oslo façade and signature side windows, this home is sure to impress.



Non-standard external areas

Burgundy





www.beechwoodhomes.com.au



**100% Australian
Family Owned**